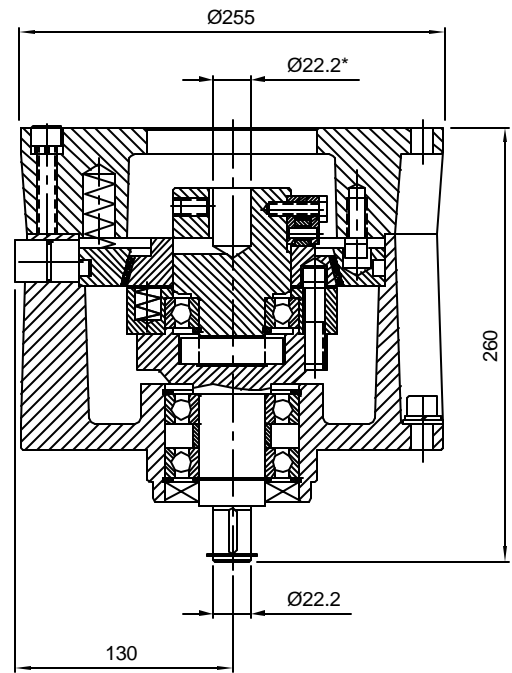
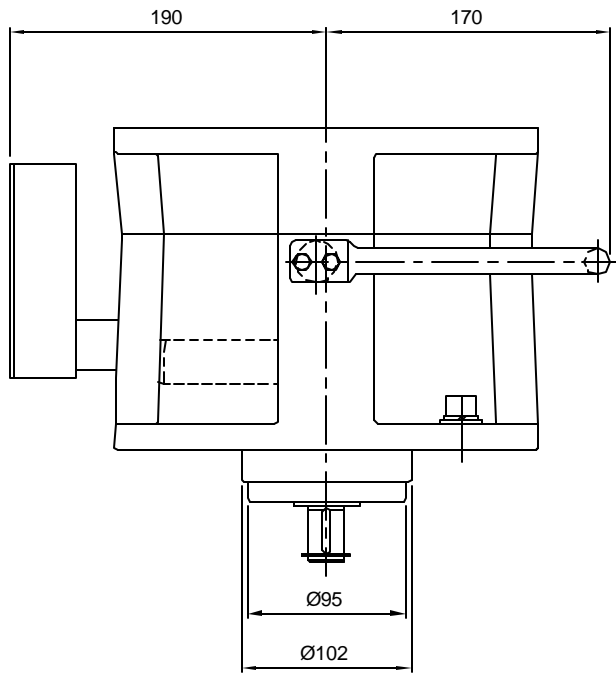


**CAD Drawing**



BRAKE				BRAKE HEATER	BRAKE TORQUE SETTINGS	BRAKE RELEASE TORQUE	
TYPE	MODEL	TORQUE [Nm]	SHAFT DIA [mm]	POWER [V-Ph-Hz]	SPRING PART NUMBER	MINIMUM [Nm]	MAXIMUM [Nm]
MECHANICAL	TRB-200	30	22.2	220 - 1 - 60	166-902-30785PT	3	5

\* NOTE:

1. BRAKE STRIP HEATER POWER (VOLTAGE) IS JOB SPECIFIC.
2. ALL MOTORS MUST BE CHECKED FOR 22.2mm(7/8") DIA SHAFT.
3. EACH BRAKE MUST BE SHOP TESTED TO VERIFY THE RELEASE TORQUE.

**ALL TECHNICAL DATA IS SUBJECT TO CHANGE WITHOUT NOTICE**  
Hillmar works have a fully registered ISO 9001 quality assurance programme (OCB #01-1626).

Rev.	Rev. By	R E V I S I O N S	Date	Rev.	Rev. By	R E V I S I O N S	Date

**Storm Brakes • Thruster Disc Brakes • Thruster • Industrial Disc Brakes • Hydraulic Power Units • Cable Reels**