

# Hillmar

Hillmar Industries Ltd.

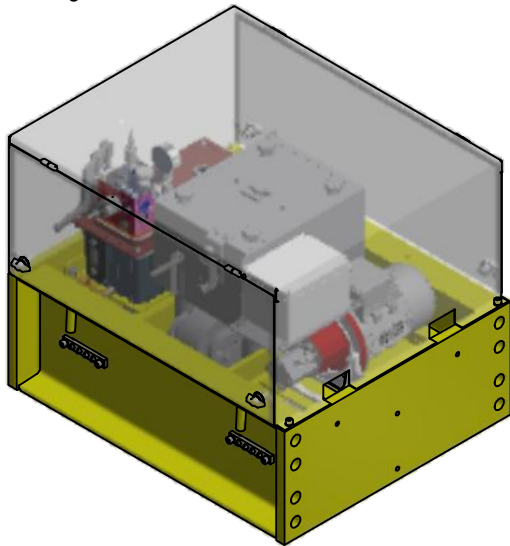
7371 Vantage Way  
Delta, BC V4G 1C9  
P:604 946-7115 F:604 946-0329  
info@hillmar.com www.hillmar.com

**RAIL CLAMP LETM050**  
**CTHV-LH-250-050-LE-W08-075PR3**  
**SPECIFICATION SHEET**  
**SLS & MKTG**  
**ENGLISH**

Sheet Number:  
Job Number:  
Form Number:  
**229-105-44815PT**  
Document Package No.: Rev.:

Company / Project Reference: Date.: Page.: 1 OF 1

Inventor Drawing



FEATURE	CODE
Rail Clamp type	CTHV-LH
Holding force	250
Coefficient of friction	050
Power unit	LE
Wedge	W08
Motor - pump	075PR3

**Example for ordering**    **CTHV-LH-250-050-LE-W08-075PR3**

**TECHNICAL DATA**

Nominal holding force (kN)	250
Standard release pressure (MPa)	13
Maximum operating pressure (Mpa)	14.45
Cylinder volume (full stroke) (cm3)	323
Cylinder volume (working stroke) (cm3)	285
Release time (s)	2-3
Mounting holes	8 x Ø29
Mounting bolts	8 x M 27 CL 10.9
Approximate weight (kg)	670
Mechanism - horizontal float (mm)	±25
Mechanism - vertical float (mm)	±25
Shipping crate (L x W x H) (mm)	1100 x 900 x 950

**NOMINAL SPECIFICATION**

Spring set - Hydraulically released device.

Control voltage electrical junction box connection to be drilled to suit requirements by customer.

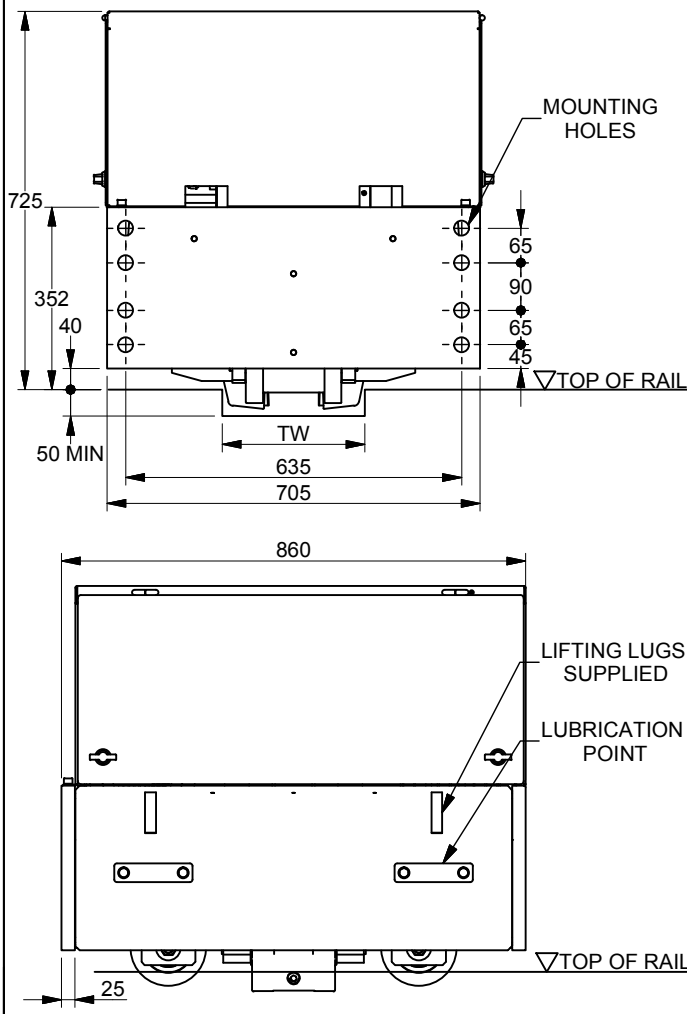
Manual release by integrally mounted hydraulic handpump.

RAIL WIDTH (mm)	MINIMUM TROUGH WIDTH TW (mm)
61 - 95	270
96 - 120	300
121 - 150	325

**NOTES**

All figures are nominal figures only.

All dimensions are in millimeters.



Document Template #710-101-62058

\*\* ALL TECHNICAL DATA IS SUBJECT TO CHANGE WITHOUT NOTICE \*\*  
Hillmar works have a fully registered ISO 9001-2008 quality assurance programme (QCB #01-1525)

C:\vaut\_workspace\HILLMAR\HILLMAR PRODUCTION\02 STORM BRAKES\0700-2\07002001 CxHV-LH\SPC-SHT-CXHV-LH\01 CTHV-XX-XXX-050-LE\44815 CTHV-LH-250-050-LE-W08-075PR3.idw