

SBC

Storm Brake Company Ltd.

MECHANISM ASSEMBLY
SIZE 35/50
OPERATION AND MAINTENANCE MANUAL

Customer:

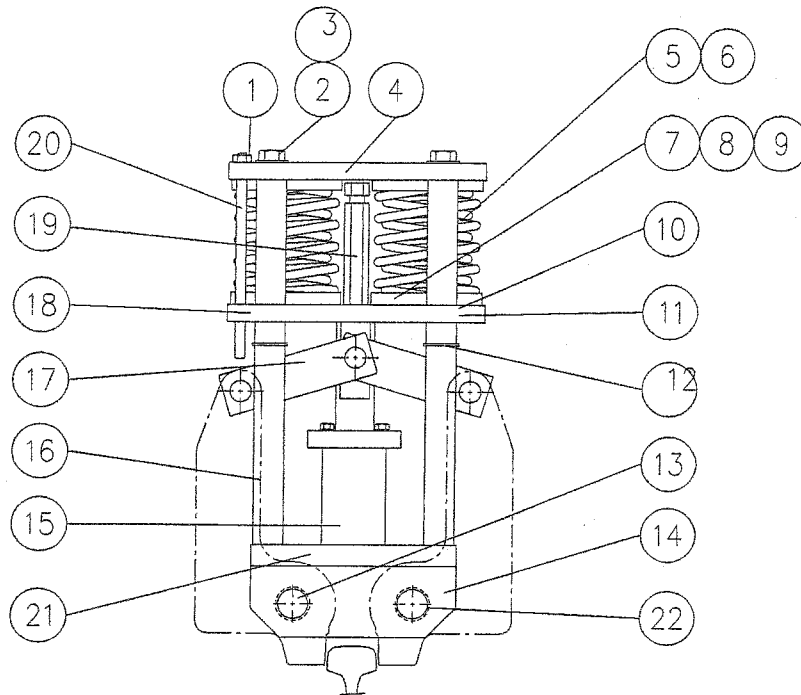
Date:
FEB 93

Sheet Number:

Job Number:
25301

Form Number:
204732

Rev.:



ITEM	DESCRIPTION	QUANTITY
1	Hex Nut	1
2	Capscrew - HH	4
3	Lockwasher	4
4	Top Spring Plate	1
5	Outer Spring	2
6	Inner Spring (Size 50 only)	2
7	Spring Retainer	4
8	Capscrew - HH	4
9	Lockwasher	4
10	Snap Ring	4
11	Guide Bushing	4
12	Snap Ring	4
13	Lower Lever Pin	2
14	Connector Plate	2
15	Hydraulic Cylinder Assembly	1
16	Support Post	4
17	Toggle Assembly	1
18	Bottom Spring Plate	1
19	Center Post	1
20	Indicator Bar	1
21	Guide Wheel Mount	2
22	Snap Ring	4

SPARE PARTS ORDERING:

JOB NUMBER - FORM NUMBER - ITEM NUMBER - DESCRIPTION

SBC

Storm Brake Company Ltd.

RAIL PACKAGE
SIZE 17/25/35/50/75/100/200
OPERATION AND MAINTENANCE MANUAL

Customer:

Date:

Sheet Number:

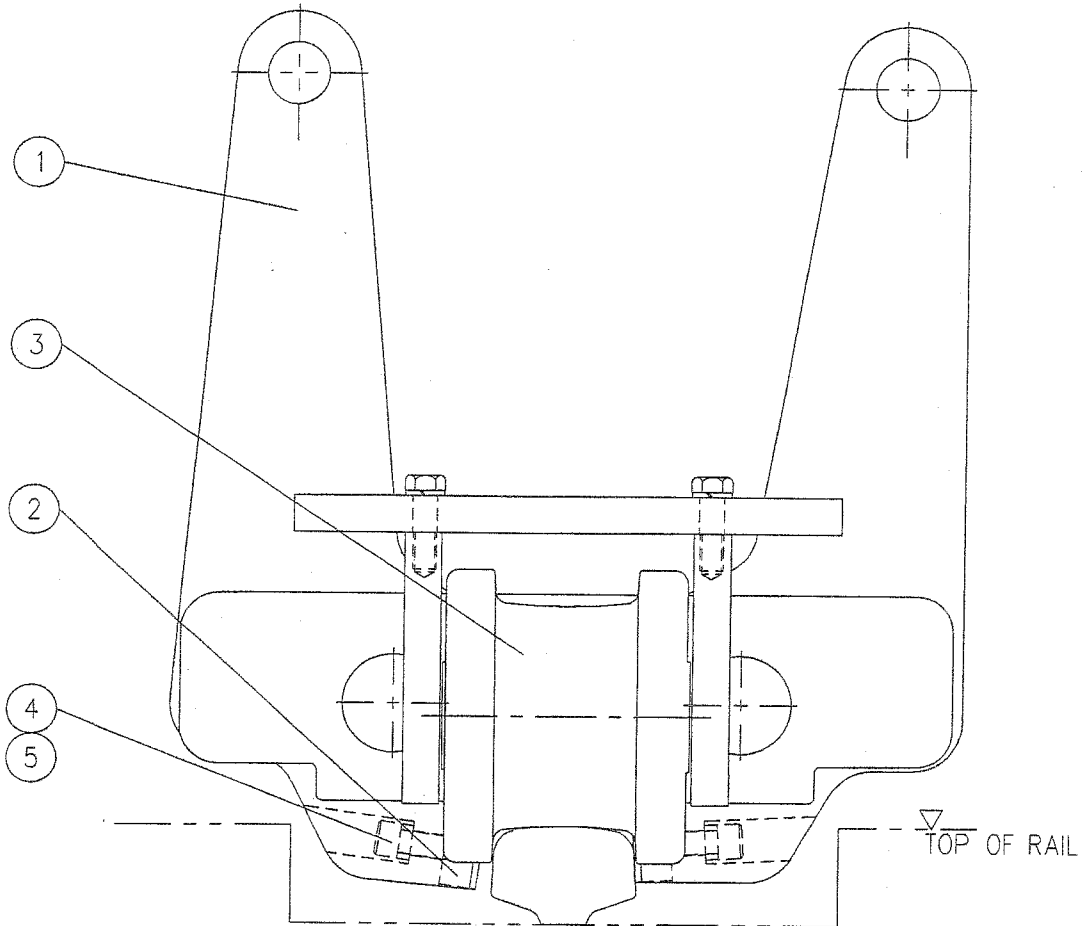
Job Number:

25301

Form Number:

204748

Rev.:



ITEM	DESCRIPTION	QUANTITY
1	Lever	2
2	Serrated Shoe	2
3	Guide Wheel Assembly	2
4	Capscrew - SH	2
5	Lockwasher - HC	2

SPARE PARTS ORDERING:

JOB NUMBER - FORM NUMBER - ITEM NUMBER - DESCRIPTION

SBC

Storm Brake Company Ltd.

GUIDE WHEEL ASSEMBLY
SIZE 17/25/35/50/75/100/200
OPERATION AND MAINTENANCE MANUAL

Customer:

Date:

Sheet Number:

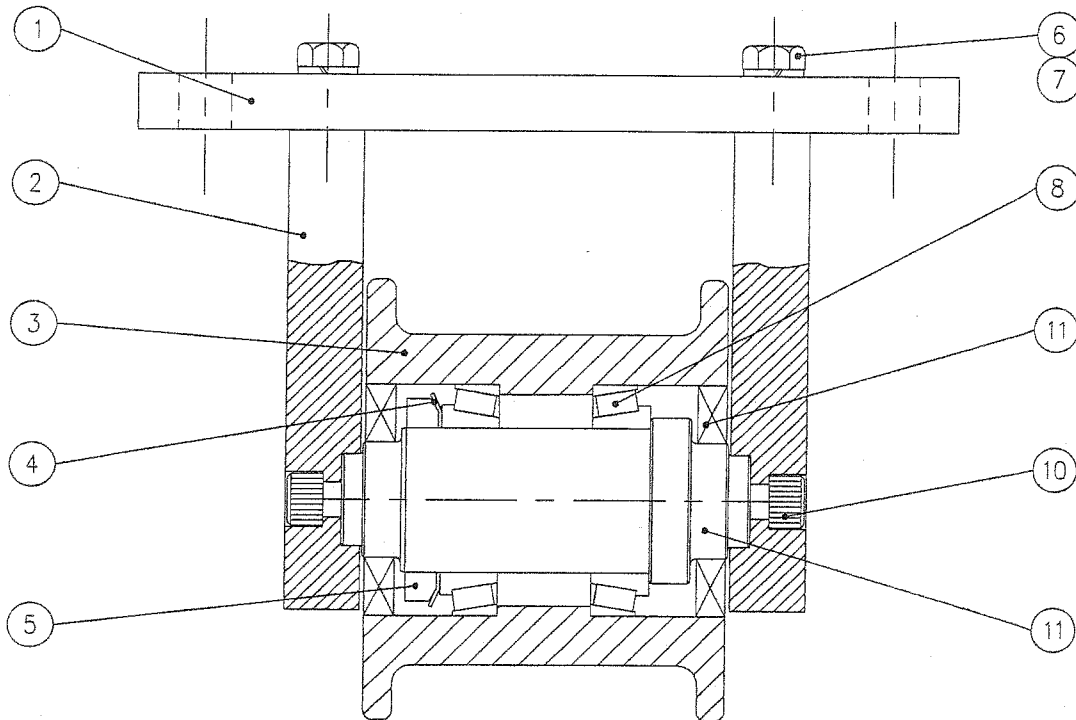
Job Number:

25301

Form Number:

206175

Rev.:



ITEM	DESCRIPTION	QUANTITY
1	Mounting Plate	1
2	Side Plate	2
3	Guide Wheel	1
4	Bearing Lockwasher	1
5	Bearing Lock Nut	1
6	Capscrew - HH	4
7	Lockwasher	4
8	Taper Roller Bearing	2
9	Seal	2
10	Capscrew - SH	2
11	Guide Wheel Pin	1

SPARE PARTS ORDERING:

JOB NUMBER - FORM NUMBER - ITEM NUMBER - DESCRIPTION

SBC

Storm Brake Company Ltd.

HYDRAULIC CYLINDER ASSEMBLY
SIZE 17/25/35/50/75/100/200
OPERATION AND MAINTENANCE MANUAL

Customer:

Date:

Sheet Number:

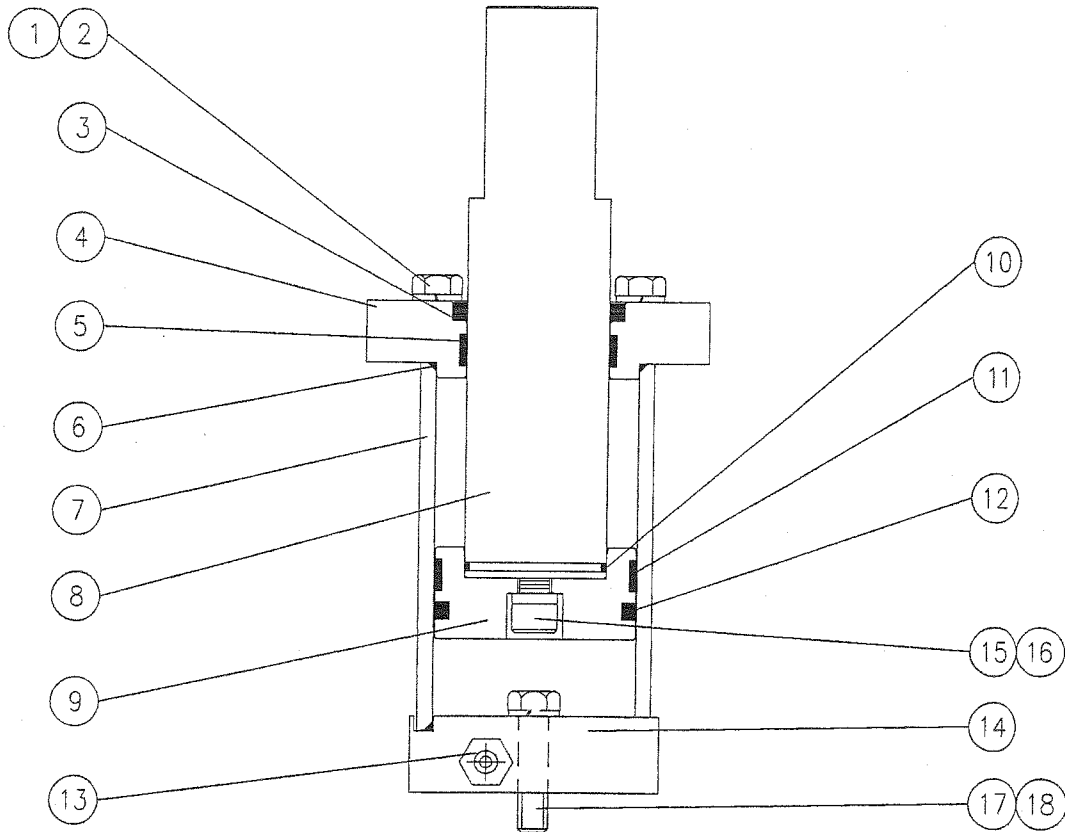
Job Number:

25301

Form Number:

204751

Rev.:



ITEM	DESCRIPTION	QUANTITY
1	Capscrew - HH	4
2	Lockwasher	4
3	Wiper	1
4	Cylinder Top	1
5	Wear Ring	1
6	O-Ring	2
7	Cylinder Body	1
8	Piston Rod	1
9	Piston	1
10	O-Ring	1
11	Seal	1
12	Wear Ring	1
13	Adaptor	1
14	Cylinder Bottom	1
15	Capscrew - SH	1
16	Lockwasher - HC	1
17	Capscrew - HH	2
18	Lockwasher	2

SPARE PARTS ORDERING:

JOB NUMBER - FORM NUMBER - ITEM NUMBER - DESCRIPTION