

ITEM	DESCRIPTION	QUANTITY
1	Hex nut	1
2	Capscrew - HH	4
3	Lock washer	4
4	Top spring plate	1
5	Outer spring	2
6	Inner spring ( size 50 only )	2
7	Spring retainer	4
8	Capscrew - HH	4
9	Lock washer	4
10	Snap ring	4
11	Guide bushing	4
12	Snap ring	4
13	Lower lever pin	2
14	Connector plate	2
15	Hydraulic cylinder assembly	1
16	Support post	4
17	Toggle assembly	1
18	Bottom spring plate	1
19	Center post	1
20	Indicator bar	1
21	Guide wheel mount	2
22	Snap ring	4

**SPARE PARTS ORDERING FORMAT:**

**JOB NUMBER - FORM NUMBER - ITEM NUMBER - DESCRIPTION**

**HILLMAR  
INDUSTRIES LTD**

**RAIL PACKAGE  
SIZE 17/25/35/50/75/100-MV  
OPERATION AND MAINTENANCE MANUAL**

Sheet Number:

Job Number:

25115

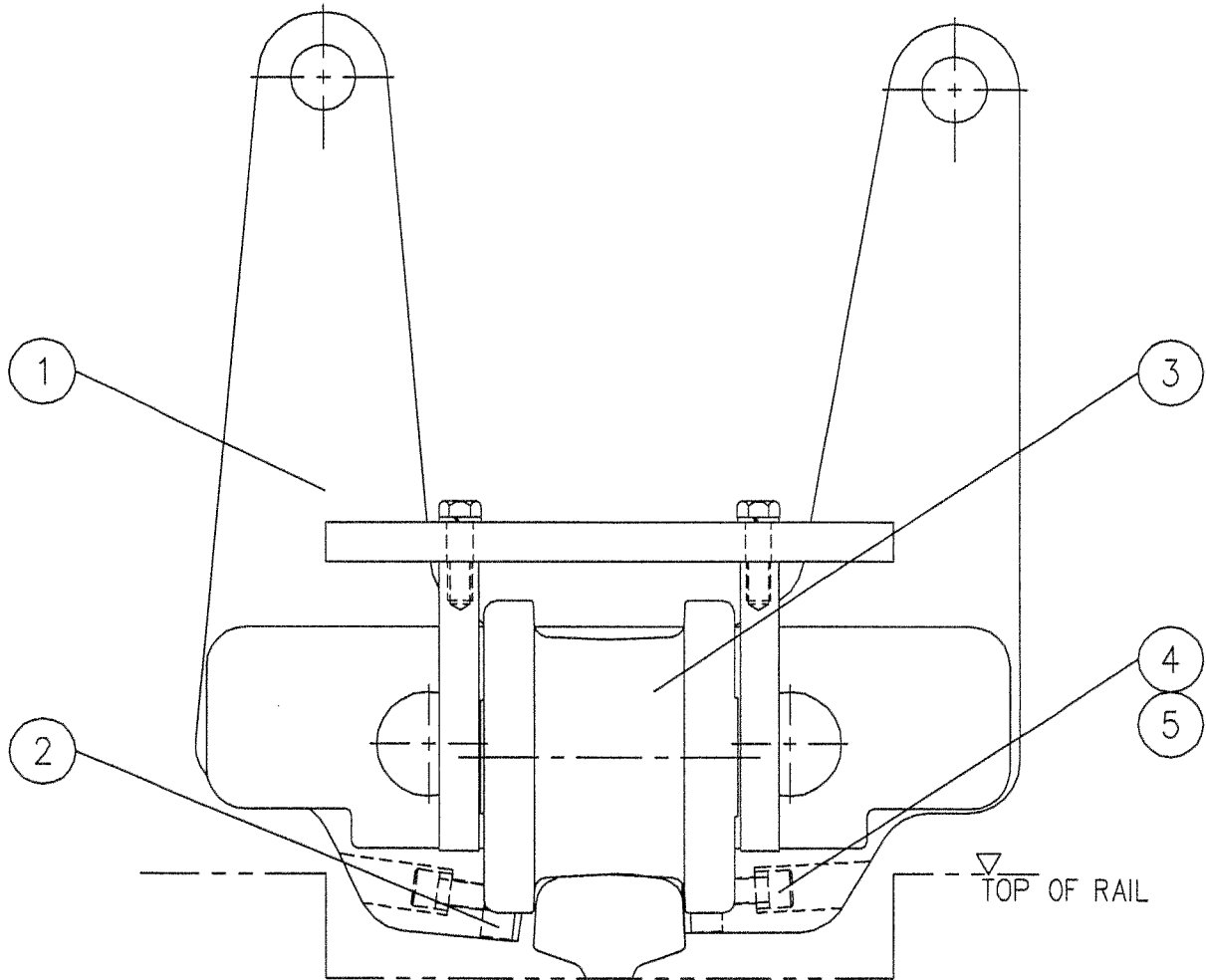
Customer:

Date:

Form Number:

2000-4748

Rev.:



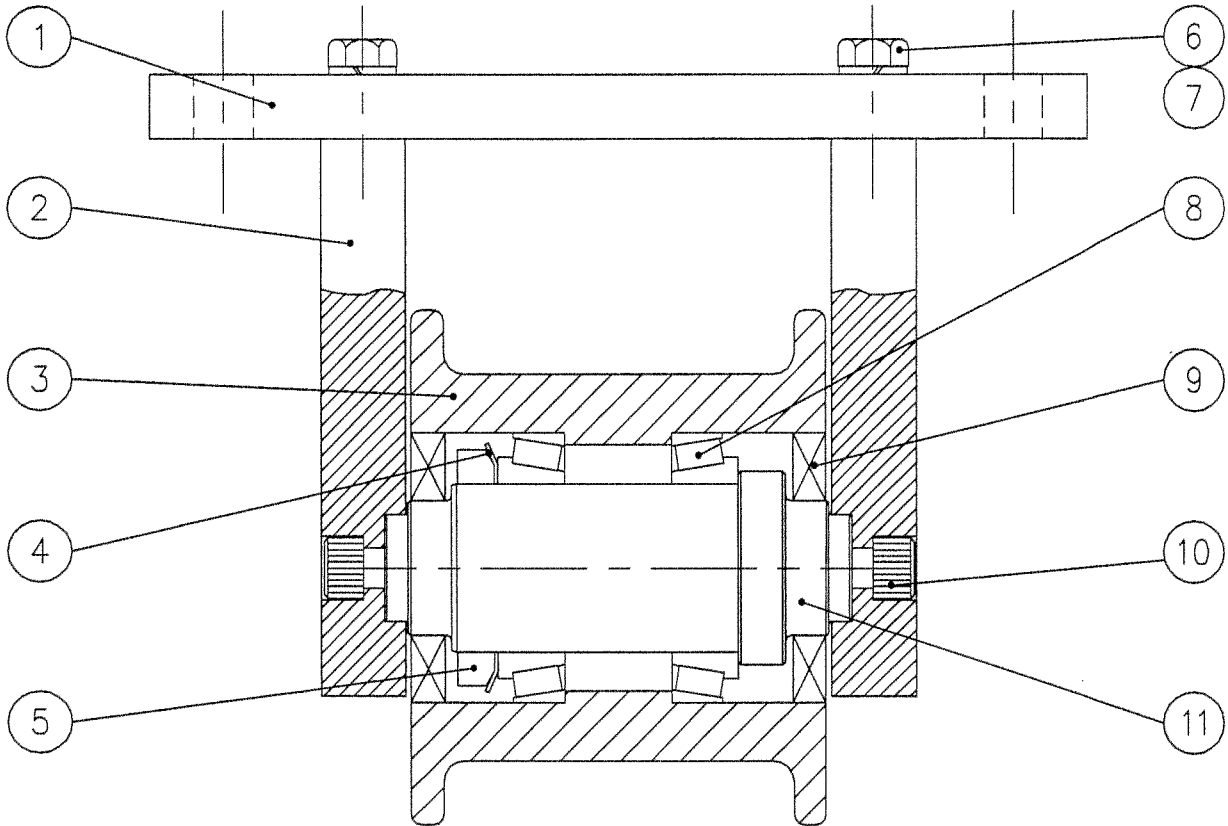
ITEM	DESCRIPTION	QUANTITY
1	Lever	2
2	Serrated shoe	2
3	Guide Wheel	2
4	Cap screw - HH	2
5	Lock washer - HC	2

SPARE PARTS ORDERING FORMAT:

JOB NUMBER - FORM NUMBER - ITEM NUMBER - DESCRIPTION

Customer:

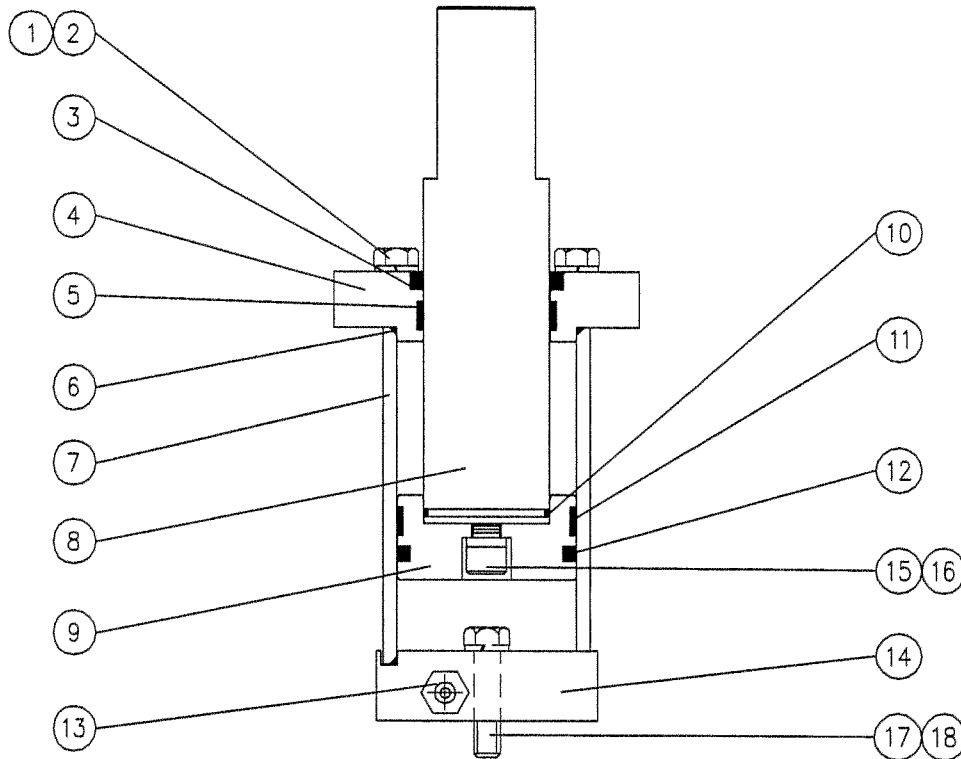
Date:



ITEM	DESCRIPTION	QUANTITY
1	Mounting plate	1
2	Side plate	2
3	Guide wheel	1
4	Bearing lock washer	1
5	Bearing lock nut	1
6	Cap screw - HH	4
7	Lock washer	4
8	Taper roller bearing	2
9	Seal	2
10	Cap screw - SH	2
11	Guide wheel pin	1

SPARE PARTS ORDERING FORMAT:

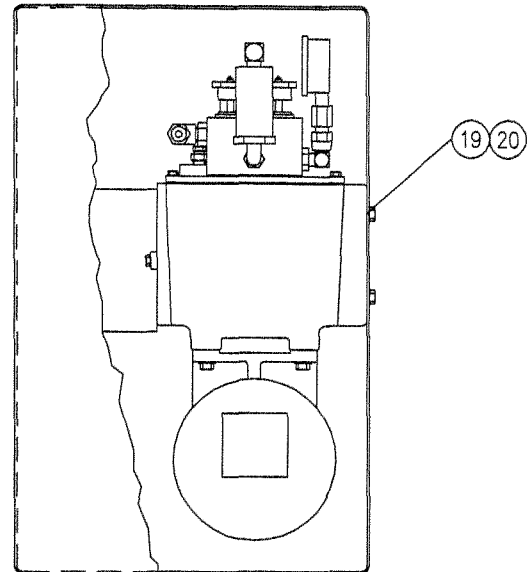
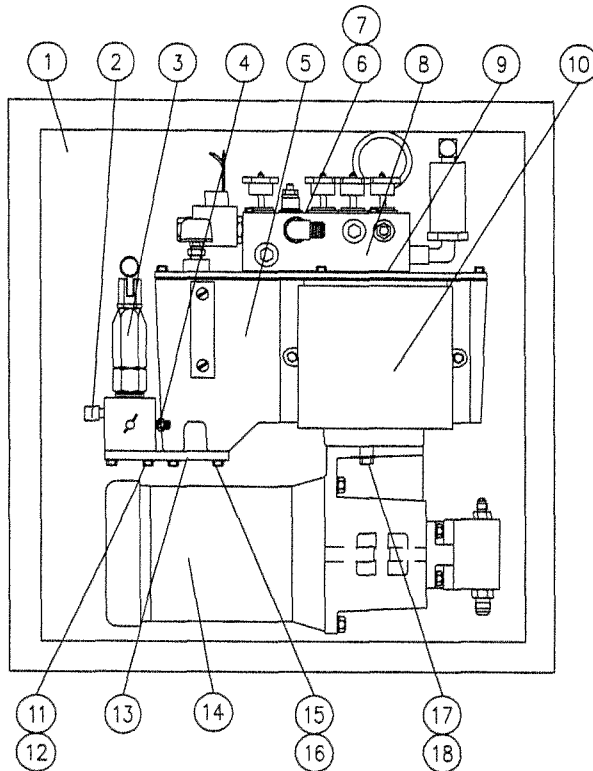
JOB NUMBER - FORM NUMBER - ITEM NUMBER - DESCRIPTION



ITEM	DESCRIPTION	QUANTITY
1	Capscrew - HH	4
2	Lock washer	4
3	Wiper	1
4	Cylinder top	1
5	Wear ring	1
6	O - ring	2
7	Cylinder body	1
8	Piston rod	1
9	Piston	1
10	O - ring	1
11	Seal	1
12	Wear ring	1
13	Adaptor	1
14	Cylinder bottom	1
15	Capscrew - SH	1
16	Lock washer - HC	1
17	Capscrew - HH	2
18	Lock washer	2

SPARE PARTS ORDERING FORMAT:

JOB NUMBER - FORM NUMBER - ITEM NUMBER - DESCRIPTION



ITEM	DESCRIPTION	QUANTITY
1	Power Pack Enclosure Assembly	1
2	Adaptor	1
3	Hand Pump	1
4	Adaptor	1
5	6 Litre Reservoir Assembly	1
6	Capscrew - HH	2
7	Lockwasher	2
8	Manifold Assembly	1
9	Manifold Gasket	1
10	Electrical Assembly	1
11	Capscrew - HH	2
12	Lockwasher	2
13	Hand Pump Mounting Plate	1
14	Pump-Motor Assembly	1
15	Capscrew - HH	4
16	Lockwasher	4
17	Capscrew - HH	2
18	Lockwasher	2
19	Capscrew - HH	4
20	Lockwasher	4

SPARE PARTS ORDERING:

JOB NUMBER - FORM NUMBER - ITEM NUMBER - DESCRIPTION